

## Corrections/Clarifications May – July 2006

### Platinum Cable – Page 22

#### Back

Armhole and Neck Shaping: BO 7 sts at beg of next two rows. Work even until piece meas 7 (7 1/2, 8)".

Next Row (RS): Work 12, (14, 16) sts and place on holder for **3-needle BO. Then BO center 16 (18, 20) sts for neck.**

Work rem 12 (14, 16) sts to end of row. **Place sts on holder for 3-needle BO.**

#### Left Front

**Armhole and Neck Shaping:** BO 7 sts at beg of next row. Cont on rem sts for 7 1/2 (8, 8 1/2)" AT THE SAME TIME when piece meas 6 1/2 (7, 7 1/2)" on WS, BO 7 sts kwise on neck edge next 2 WS rows. Work even. **Place rem shoulder sts on holder for 3-needle BO.**

### Donegal Tweed Jacket – Page 30

Clarification on front of jacket:

#### Left Front

Row 3: K1, [p2, k2] 3 (4, 5) times, p1, slip marker, p1, k4, p2, k4, p1, slip marker, p1, [k2, p2] 3 (4, 5) times, p1.

#### Right Front:

Row 1: K1, p1, k2, [p2, k2] 3 (4, 5) times, place marker, p1, k4, p2, k4, p1, place marker, [k2, p2] 3 (4, 5) times, k2.

Row 3: P1, [k2, p2] 3 (4, 5) times, k2, p1, slip marker, p1, k4, p2, k4, p1, slip marker, p1, [k2, p2] 3 (4, 5) times, k1.

### Men's Caramel Cable – Page 33

#### Patterns

Cable Pat A (Worked over **26** sts)

### Pinnacle Poncho – Page 39

#### Pattern Stitch:

Row 4: K5, \*M1 by knitting under the horizontal strand before the next st, k1, pass the made st over the k1\*. Rep from \* to last 5 sts, k5.

### Ventura Striped Tank – Page 53

#### Finished Measurements:

Chest: 28 (32, 36, 40)".

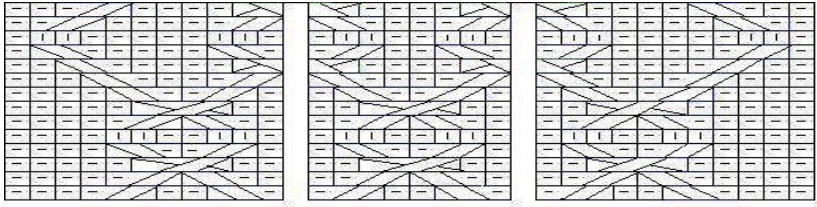
Length: Approx. 23 1/2 (24, 25, 26)"

#### Body

CO should be in Purple

### Suri Aran Sweater – Page 50



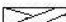
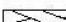
#### Corrected Charts:



2 7  
2 5  
2 3  
2 1  
2 3  
1 9  
1 7  
1 5  
1 3  
1 1  
1 9  
1 7  
1 5  
1 3  
1 1

Repeat

Serpentine Cable Chart

-  sl 1 st to cn, hold in back, k2, then p1 from cn
-  sl 2 st to cn, hold in front, p1, then k2 from cn
-  sl 2 st to cn, hold in back, k2, then k2 from cn
-  sl 2 st to cn hold in front, k2, then k2 from cn

Cable Key

### Simple Slip Stitch Tunic – Page 56

Gauge was stated incorrectly - it should read -  
 16 sts and 24 rows = 4"/10 cm  
 Using # 9 needles

Back

The number of stitches you are told to cast on should stay the same, but 1 stitch needs to be deleted at the end of the first pattern row, making the numbers 79 (87, 99). Do the same for the sleeves too, deleting 1 st.

CO 80 (88, 100) sts. Work 2x2 rib for 4 rows.

Next Row: (RS): P1, M1, P1, \*(sl 1 wyib, p3); rep from \* end sl 1 wyib, p2 Row 1 (WS): K2 \*(p1, k3); rep from \*, end p1, k2 Row 2 (RS): P2 \*(sl 1 wyib, p3); rep from \* end sl 1 wyib, p2.

(At neck edge) - BO 21, 25, 33) neck sts pwise.....

Work Front and Sleeve using pattern, increasing 1 st after 4 rows.

### Try A Beginner Lace Swatch – Page 62

“SSK” is the abbreviation for “slip, slip, knit: Slip 2 sts knitwise one at a time to right-hand needle, insert left-hand needle in front of these 2 sts, and knit them tog.”

SSK is the most common left-slanting decrease. The writer of the Learn-A-Stitch Kit “Simple Lace Patterns” lesson has inadvertently put the abbreviation for SKP instead of SSK. Note that both SSK and SKP produce the same knit result. While the SSK is slightly “neater” than SKP, the two stitches are virtually interchangeable.

The easiest way to correct your “Lace Swatch” lesson would be to simply follow the SSK definition given above (and in the back of *Cast On*). By doing this you will find no change needed in the chart or pattern table.

We will update the Learn-A-Stitch kit with this correction, also.